

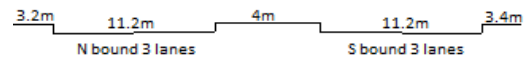
YEAR 2023

COVERAGE (B) STATION 4222

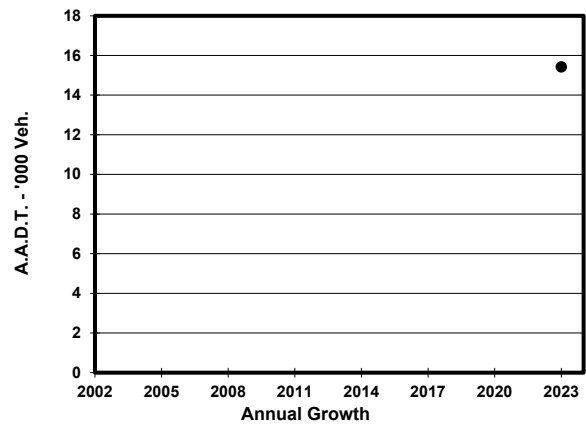
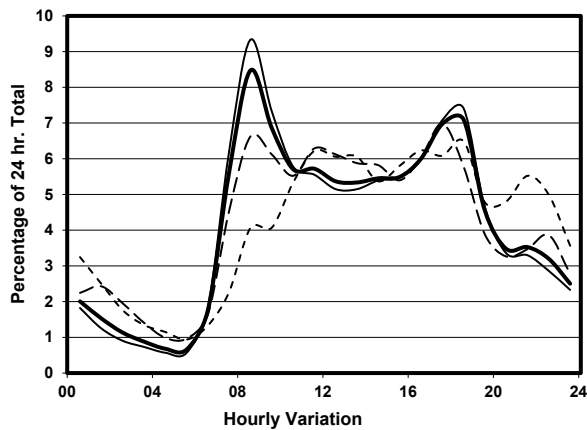
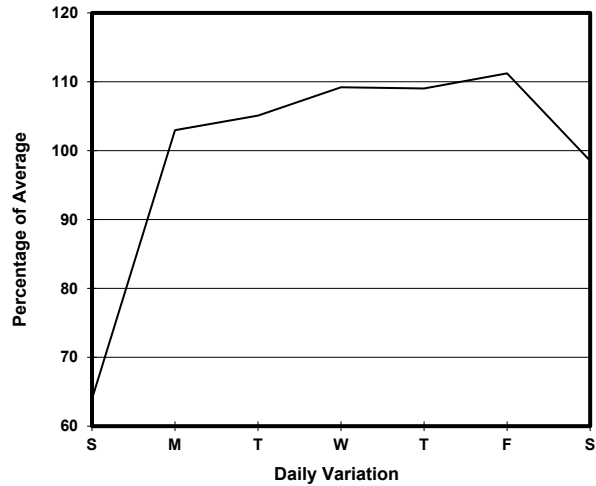
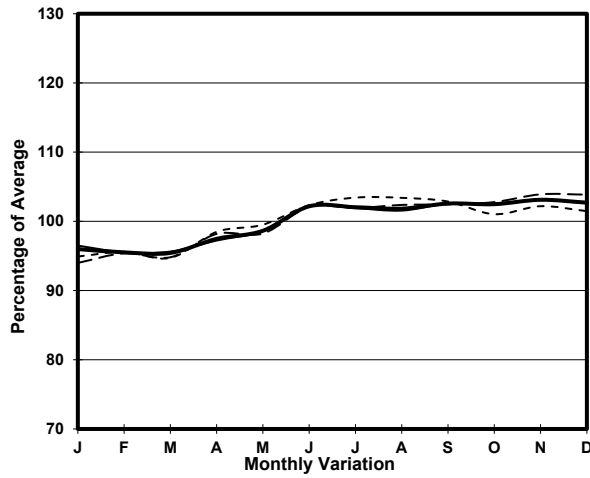
ROAD NETWORK MAJOR

ROAD TYPE DISTRICT DISTRIBUTOR

LINK SHING KAI RD (from SUNG WONG TOI RD to KAI SHING ST)



1. TRAFFIC FLOW VARIATION AND GROWTH



2. TRAFFIC CHARACTERISTICS (BY DIRECTION)

Parameter	All - Day	Mon. - Fri.	Sat.	Sun.
SOUTH BOUND				
A.A.D.T.	6680	7350	6950	4030
R 12 / 24 - %	76.1	77.8	73.4	65.5
R 16 / 24 - %	89	90.3	85.5	83.4
AM Peak Hour	0800-0900	0800-0900	0900-1000	0900-1000
One-way flow at AM peak hour	470	570	490	180
T - % (AM)	-	15.6	-	-
PM Peak Hour	1700-1800	1800-1900	1700-1800	1800-1900
One-way flow at PM peak hour	550	650	550	270
T - % (PM)	-	5.2	-	-
Prop.of commercial vehicles - 16 hr.	-	14.4	-	-
NORTH BOUND				
A.A.D.T.	8740	9580	8580	5980
R 12 / 24 - %	72.6	74.4	69.3	63.1
R 16 / 24 - %	88.8	89.8	85.7	84.7
AM Peak Hour	0800-0900	0800-0900	0800-0900	0800-0900
One-way flow at AM peak hour	830	1010	620	260
T - % (AM)	-	10.1	-	-
PM Peak Hour	1800-1900	1800-1900	1700-1800	1800-1900
One-way flow at PM peak hour	550	610	530	380
T - % (PM)	-	6.2	-	-
Prop.of commercial vehicles - 16 hr.	-	11.3	-	-

3. OTHER INFORMATION AND COMMENT

4. Vehicle classification and occupancy - Monday to Friday

Time		Class of vehicle									
		Motor Cycle	Private Car	Taxi	Private LB	PLB	Goods veh.		Non Fr. Bus	Fr. Bus	
							Light	M & H		SD	DD
0700-0800	Pro	7.8	23.9	37.5	7.1	0.0	12.9	3.9	4.5	0.0	2.4
	Ocp	1.2	1.7	2.1	9.6	0.0	1.4	1.0	10.6	0.0	24.8
0800-0900 Peak hour	Pro	3.9	36.6	36.3	1.1	0.0	9.9	8.5	2.5	0.0	1.4
	Ocp	1.0	1.3	2.1	4.0	0.0	1.4	1.3	9.1	0.0	22.9
0900-1000	Pro	3.8	39.6	26.7	0.0	0.0	15.8	11.0	1.4	0.0	1.7
	Ocp	1.0	1.3	2.0	0.0	0.0	1.4	1.1	10.0	0.0	10.9
1000-1100	Pro	1.6	32.9	21.9	0.0	0.0	30.7	9.9	1.1	0.0	1.9
	Ocp	1.0	1.6	2.0	0.0	0.0	1.5	1.3	4.0	0.0	6.3
1100-1200	Pro	5.7	24.2	17.8	0.0	0.0	34.3	14.0	1.9	0.0	2.1
	Ocp	1.0	1.4	1.9	0.0	0.0	1.8	1.3	5.3	0.0	7.2
1200-1300	Pro	5.3	48.6	14.1	2.3	0.0	18.7	7.0	2.3	0.0	1.6
	Ocp	1.0	1.6	2.0	2.3	0.0	1.8	1.1	15.8	0.0	7.7
1300-1400	Pro	4.7	32.5	20.7	1.8	0.0	14.8	18.9	4.7	0.0	1.8
	Ocp	1.1	1.9	2.0	6.7	0.0	1.4	1.3	15.9	0.0	6.8
1400-1500	Pro	1.7	34.9	21.0	1.1	0.0	24.3	13.3	1.7	0.0	2.1
	Ocp	1.0	1.5	1.9	6.0	0.0	1.3	1.3	14.3	0.0	6.7
1500-1600	Pro	3.3	37.9	15.7	3.3	0.0	15.0	17.0	5.9	0.0	2.0
	Ocp	1.0	1.4	1.9	5.8	0.0	1.4	1.3	10.3	0.0	13.8
1600-1700	Pro	4.2	38.4	19.2	3.0	0.0	22.8	9.0	1.2	0.0	2.1
	Ocp	1.0	1.5	1.5	4.8	0.0	1.6	1.2	1.5	0.0	9.2
1700-1800	Pro	7.9	46.0	15.9	1.1	0.0	17.5	7.4	2.6	0.0	1.6
	Ocp	1.1	1.6	1.8	3.0	0.0	1.8	1.1	1.2	0.0	11.8
1800-1900	Pro	9.7	61.3	17.3	0.8	0.0	5.2	3.6	0.8	0.0	1.2
	Ocp	1.0	1.5	2.1	4.5	0.0	1.2	1.1	3.5	0.0	16.8
1900-2000	Pro	7.5	59.1	22.0	0.0	0.0	5.7	3.1	0.0	0.0	2.5
	Ocp	1.0	1.3	1.9	0.0	0.0	1.2	1.2	0.0	0.0	14.3
2000-2100	Pro	8.2	53.3	25.6	0.0	0.0	9.2	0.0	0.0	0.0	3.6
	Ocp	1.0	1.4	2.0	0.0	0.0	1.3	0.0	0.0	0.0	5.6
2100-2200	Pro	13.1	40.0	35.1	0.0	0.0	5.7	3.3	0.8	0.0	2.0
	Ocp	1.1	1.7	2.0	0.0	0.0	1.4	1.5	1.0	0.0	6.1
2200-2300	Pro	13.2	39.6	37.6	0.0	0.0	3.0	3.0	1.0	0.0	2.5
	Ocp	1.1	1.4	1.9	0.0	0.0	1.3	1.0	1.0	0.0	4.8
16 hours	Pro	5.9	40.8	23.7	1.4	0.0	15.6	8.6	2.1	0.0	1.9
	Ocp	1.0	1.5	2.0	6.1	0.0	1.5	1.2	9.4	0.0	11.4

Legend: Pro. Proportion of vehicles in % (Sum may not add up to 100% due to figure rounding)*

Ocp. Average occupancy of vehicles including both driver and passengers*

M&H Medium and Heavy

* All traffic data are collected from combined bounds